

The Cutting Edge

Monthly Newsletter of the Ottawa Lapsmith and Mineral Club

In this month's Newsletter:

Silversmith's Message	p. 1
Club News	p. 2
Field Trips	p. 3
Are My Rocks Radioactive?	p. 3
Gem Show Updates	p. 4
Member Profile: Kerry Day	p. 5
Jeju Island	p. 6
Mimetite	p. 8
Workshop Schedule	p. 9
Membership form	p. 10

Mailing Address:

PO Box 57012, Ottawa RPO
Gladstone, Ottawa, ON, K1R 1A1
Phone: 613-850-5486

Website:

<https://olmc.ca/>

Facebook:

<http://www.facebook.com/OttawaLapsmithMineralClub>

Instagram:

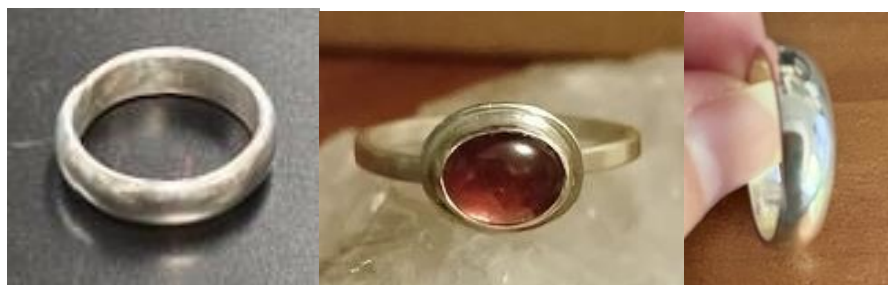
<https://www.instagram.com/olmcnews/>

Silversmith's Message

May has been a busy month in the silversmith workshop. We acquired some new tools and now have all the tools for sand casting, future workshops to come on the technique. We also had the first, long awaited, basic silversmith course. Don Alp taught a ring making workshop to 4 enthusiastic students and the outcome was 4 amazing rings and lots of fun. Here are two of the rings. (see photos below).

This month Karla Fox will be teaching to enamelling classes, Introduction to Enamelling and Cloisonné. Both classes are full but keep your eye out for future courses.

Don Alp will teach a basic bezel setting class on Sunday, June 8th, 12 -3pm. Participants can bring a stone to set and make into a pendant, or add to a ring. Silver for a setting up to 25 x 15 mm will be supplied, and the class will cover making the bezel, soldering the bezel to the base and adding a jump ring and bail. The course will be \$70 + \$5 shop fee, and some cabochons will be available at a nominal extra cost. To register or get more info e-mail donovanalp@gmail.com.



Janet Borzecki

OLMC Secretary

All members are invited to submit articles, proposals, and thoughts that could be included in the newsletters. Also, feel free to send your Classified ads by e-mail to: news@olmc.ca

Workshop News

Workshop water saws are not for hard stones. Please do not cut Agates, Jaspers, Chalcedonies or Flints on the water saws. These hard stones will strip the diamonds off the blade. The once-nice blade 10-inch water saw had to be thrown out and replaced with a poor spare. More blades have been ordered.

Always use an oil saw for such cutting. The big oil saws should be repaired by June. President Kerry Day's home 18-inch oil saw is up and running. If anyone needs priority cutting, then they can contact him (pres@olmc.ca). Thanks to Colin Geitzler, there is an enclosed 10-inch, motorized saw for slab cutting. It will be installed in the saw room.



For Supervisors: Please do a complete look around before you leave the shop. Make sure windows are closed and blinds are pulled down, and that there is no water sitting in the grinder trays. Make sure the spray bubblers are all turned off.

Field Trips Hosted by the OVMC

The *Ottawa Valley Mineral Club* has published part of its [2025 field trip](#) schedule. Only OVMC members may attend, so join up for just \$25 at <https://www.ovmineralclub.ca/>. Be prepared: protective clothing, good tools, food & water, and bug spray.

Saturday, May 31, 10:00 am-4:00 pm	Yates Mine, Otter Lake, QC RSVP, \$10 fee	mica, fluorite, uranothorite, apatite, diopside, fluorite, titanite, zircon, and more
Saturday, June 14, 10:00 am-4:00 pm	Long Lake Zinc Mine, NW of Parham, ON	zinc and lead ores, chalcopryrite, galena, molybdenite, pyrite, sphalerite, and more
Tuesday, July 8, 10:00 am-4:00 pm	Craigmont Corundum Mine, near Combermere, ON	bronze corundum, biotite, magnetite, mica, molybdenite, pyrite, smoky quartz, scapolite
Saturday, July 26, 10:00 am-4:00 pm	Miller Property, Sebastopol Township, ON RSVP, \$10 fee	apatite, feldspar, fluorapatite, calcite, biotite, titanite and zircon
Wednesday, August 6, 10:00 am-4:00 pm	Amherst Island Fossil, l'île d'Amherst, ON RSVP, free entrance	crinoids, bryozoan, snails, corals

The OLMC may have a few field trips of its own in the late summer/fall. Details will be announced once they are known.

Field Trips Hosted by the Brantford Club

The Brantford Lapidary and Mineral Society has invited our members to attend their big field trips this year. If you are interested, then please contact Gerald Van Decker, President, at gerald@renewability.com. Mr. Van Decker writes:

I wanted to give your members “dibs” amongst CCFMS clubs to join us on our Cobalt Silver Rockhounding field trip. You had one member who came last year and, I believe, he was very happy with the trip. This may be the last year that our amazing Guide, Chuc Cauchi, can do the trip for us. Because we compensate our leaders and guides, we require at least six of our members to sign up first, and then we offer to other CCFMS clubs’ members.



◆ July 19 & 20 – Cobalt

Target: Historic silver mining region. There are only 4 of 16 spots remaining for this very popular trip: A chance to explore and collect native silver. CCFMS CLUBS' MEMBERS CAN BOOK: <https://theblms.as.me/2025CobaltSilver> NOTE: Payments can only be made now via PayPal.

◆ June 28 to July 1 – Thunder Bay

Target: Beautiful Amethyst crystals in the heart of amethyst country. A long weekend adventure! NOTE: It is a 1,600 km drive from Ottawa, or hours by airplane, so plan well..

◆ August 9 & 10 – Bancroft

Target: Various minerals in Ontario’s Mineral Capital. Always something new to discover!

This will be available to book very soon. We have two excellent guides and two mine visits. I will send the link when it is opened up. We have one excellent guide and will have more details soon

Are my rocks radioactive? How to Tell

Unfortunately, you cannot tell how radioactive something is just by looking at it. You will need a radiation detector. Keep in mind that different detectors show different types of radiation: alpha, beta, gamma, x-ray, and/or neutron. A gamma ray detector will not detect alpha radiation. The [NRC web site](#) has more information about detectors.

If you cannot afford a Geiger counter or a scintillator that lights up when hit by ionizing radiation, you can [make your own cloud chamber](#) with some dry ice and rubbing alcohol and a large enough container for the stone. Radioactive particles may be seen shooting through the mist. Another method is to leave the material on photographic film in a dark room; radioactive material will make an imprint.

You might find radioactivity in the following stones: smoky quartz; gadolinite, monazite, and other rare-earth minerals; any uranium-bearing minerals like canary-yellow carnotite and tyuyamunite, yellowish-green-to-green autunite, and green torbernite; greenish trinitite, a quartz sand that was fused together by the world’s first atomic detonation.

Also check out “[/r/Radioactive_Rocks](#)” on Reddit.

Gem Show Committee Seeks Volunteers

Please consider helping out the club and volunteering for some aspect of the gem show in September. Having enough or, even better, a surplus of volunteers allows the show committee set up tables for the show, to hold various crafting demonstrations on lapidary and silversmithing, to support the vendors and academic partners at their booths, and to provide a safe and welcoming environment for shoppers and hobbyists alike.

Just two hours of your time is all we ask, though more would be super. Contact Stephane Jette at showchair@olmc.ca to enrol.

Gem Show Supplement

Find out more about what goes on at the OLMC gem, mineral & jewellery show & sale in this photo essay of past shows. <http://www.olmc.ca/news/gemshow-supp.pdf>

A Place for Our Members Creations

The OLMC Gem, Mineral & Jewellery show is fast approaching, and club members have an excellent opportunity to sell their hand-made lapidary crafts and jewellery in a risk-free environment.

Contact Vicki Jasperse (vicki_jasperse@rogers.com) or Stephane Jette (showchair@olmc.ca) for info.



Show Partners Welcome

Academic and volunteer organizations related to geology, mineralogy, lapidary and jewellery-making are welcome partners at the show. It is our pleasure to make a certain amount of space available for free for these groups for demos and presentations. Contact the show committee at showchair@olmc.ca

Information for Volunteers

Upon arriving at the show venue

- Volunteers get free entrance to the show for the whole day.
- If you have any questions or have any trouble, talk to the team leader for the area, or the Show Chair who is probably walking around.
- Please be courteous and ethical.
 - Do not harass a vendor. Do not tell people to avoid a vendor.
 - Do not abuse your position as a volunteer to sell your personal crafts.
 - Please be helpful to others and answer their questions if you can.

After your shift, feel free to wander around the show or volunteer at another area.





OLMC President Kerry Day on a field trip to the Smart Mine in 2021. Photo courtesy of M.J. Farkas

Member Profile: Kerry Day

Kerry Day has been the OLMC President since 2017, at a time when many other Executive Committee and Chair positions had new occupants. The club had completed the workshop move from the Bell Street location to Brookfield Road.

There was one club called the Ottawa Valley Mineral Association which was [incorporated in 1958](#) by the Emmersons, museum people and a bunch of others. In the early 60s, there was a disagreement between the cutting people and the rock collecting people. The cutting people went off on their own and became the Ottawa Lapsmith Club. I joined the old OVMA back in '83. I was its last president until the mid-1990s. In 1997, I closed the club down, and forwarded what was left of the balance to the Ottawa Lapsmith Club, and we became the Ottawa Lapsmith and Mineral Club. I've been part of the Executive of the OLMC since 1997.

The OVMA was all about mineral collecting and speakers, so when I joined, I was interested in rock collecting, and I was interested in the talks. I've never done lapidary. I do cutting and polishing, but that is as far as I've ever gone.

I have been selling or trading rocks in one form or another since Bancroft 1983. The very first OVMA meeting I ever attended was the annual auction. I was so impressed that I was just hooked. Then I went to the first Bancroft show that summer. I had no idea there were mineral shows. Went to the first Ottawa show in '83, and I had no idea they even existed.

I've been collecting rocks for 44 years now, but never seriously, always part time. Some people try to make a living selling rocks, but I never went down that route. I graduated as a geologist, and I worked in the industry for 25 years. Now I'm officially retired.

The club is in good shape. Membership is in good shape. We have a critical shortage of volunteers. All clubs are like this. People come here to play, not to work. If there's one challenge the club has it is the declining attendance at the show.



The flat lap station assembly by Kerry, and where you may often see him working.

Jeju Island Global GeoPark

Jeju Island is a World Geopark about 100 km south of South Korea. The island is the result of a large shield volcano, a hot spot on a stationary continental crust plate. The last eruption was in 1007 AD. The island is known for its variety of volcanic formations and some other geologic features. In particular, there are nine very popular sites to see.

The symbolic icon of Jeju, Mt. Hallasan, dominates the center of the island, and is the highest Korean mountain at 1,947 m. It has waterfalls, eroded rock formations, and a lake-filled crater. There are hiking tours.

On the west coast of the island is the Suwolbong tuff ring, and a research site for hydrovolcanic landforms. On the south and south-west side known as the Yongmeori Coast, there are five formations.

Starting in the west, see the impressive lava dome of Mt. Sanbangsan, and next to it the Yongmeori tuff ring that reveals a well-preserved history of hydrovolcanic activities during the early days of the island.



Mt. Sanbangsan lava dome, photo taken from the [Jeju Tourism Organization](#)

Further east is the Jusangjeolli Columnar Joint with its hexagonal lava pillars. The volume in the solidified lava shrank as the hot lava flows from volcanic explosions cooled down. As a result, the hardened lava formations were split vertically forming its hexagonal pillar shapes. Then there is the Seogwipo Formation, layers of shellfish fossils that preserve the marine environment one million years ago. Next to that, the Cheonjiyeon Falls show eroded sedimentary deposits while carving a valley into the land.

On the east coast of Jeju, Seongsan Ilchulbong sunrise peak is another tuff cone reminiscent of a fortress, tenuously connected to the island by a thin land bridge. Erosion has exposed its structure and created amazing sedimentary characteristics, making it an important location for studying volcanoes in shallow seas (Surtseyan volcanoes).

On the north-east corner is Manjanggul cave, but it is only open to visitors as part of the Geomunoreum Lava Tubes tour. This is an impressive series of lava tube caves with an extraordinary array of carbonate stalactites and many other multicoloured formations on the roofs and floors bordered by dark-coloured lava walls.



Part of a lava tube, Korea.net / Korean Culture and Information Service, [CC BY-SA 2.0](#), via Wikimedia Commons

<https://ijto.or.kr/english/?cid=12>

<https://whc.unesco.org/en/list/1264>

Foymount Going Out of Business Sale June 14-15

After over 40 years of collecting, Tom Kaddits (a former member) is having a two- day "going out of business" sale of his rocks, minerals and equipment. The sale will be held **June 14 & 15, at his shop/home on 43 Sebastopol Drive, Foymount, Ontario.**

The Kingston Lapidary Club is having a field trip there (Quadeville Pit), and Ottawa club members are welcome. For more information, please call 613-754-2685.

Extract Gold from Circuit Boards

[BBC Earth Science](#) posted a four-minute video showing how gold is retrieved from circuit boards. All it takes is a mix of strong acids that dissolve the gold, but not the other metals. Dump the greenish solution into a container, and then add a secret ingredient (shh!) to resolve the gold.

Is it a rock or an ancient stone tool?

You might have visited an archaeological dig or museum and considered how some stone tools could be easily confused for ordinary rocks. Here are [a few clues](#) to help.

Some stones were cracked or flaked to create sharp edges around a core. Flint and obsidian tools are common examples of this. A pattern of multiple flake removals along an edge can strongly indicate a deliberate man-made shaping process. Finally, location is important. A shaped stone in a known human settlement is more likely to be a tool than one found in Antarctica



The Bancroft Gem & Mineral Club
Presents its
27th Annual Gem & Mineral Show
Sunday, July 27, 2025
10:00 am - 4:00 pm
Bancroft Fish & Game Club
27602 Hwy 62, 2 km S of Bancroft

Exhibits & Displays
Lapidary Demos × Mineral Specimens
Rock & Mineral Identification Service
3 Silent Auctions × 3 Door Prizes
Grand Live Auction

Featuring

**NATIVE
ELEMENTS**

Admission: \$3 Adults
Admission to both Mineral Show
& Mineral Museum \$5

Children and Students free (15 yrs or less)
All proceeds to the Bancroft Mineral Museum

Thank you

Mark Stanley
of Norwood, Ontario

for generously donating his services for
our live auction.

From the Library...

Fine horizontal lines ... mark the eras of the crystal's growth. One can use these to attune to the geological time periods spanned by the crystal's development, as one would be able to read tree rings for a record of the weather and other data. These lines have frequency vibrations that hold the secrets of the era in which the crystal came into being.

The small crystals which occur within larger ones are especially holy. They represent a seed repository of higher consciousness. One can meditate with such crystals, and attune to the seed within. This kind of meditation will often lead to an attunement to unmanifest reality, a state of consciousness void of thoughts and visions.

Roger Calverley
The Language of Crystals, 1987



43rd Annual
Sudbury Gem & Mineral Show
Northern Ontario's Largest
Gem, Jewellery & Mineral
Show and Sale

July 18 to 20, 2025

Friday July 18, 5 pm - 9 pm
Saturday July 19, 10 am - 6 pm
Sunday July 20, 10 am - 5 pm

- Dealers • Displays • Door Prizes
- Gems • Beads • Handcrafted Jewellery
- Minerals • Fossils • Rock Craft
- Demonstrations • Mineral ID
- Kid's Activities • Metal Detecting
- Outdoor Vendors, Sat. 10:00 to 4:00

Carmichael Arena
Bancroft Drive, Sudbury, Ontario
Barbecue, Free Parking




For info, go to <https://ccfms.ca/upcoming-gem-mineral-and-fossil-shows/> or call (705) 522-5140

Mimetite

Mimetite typically forms short hexagonal crystals of lead arsenate chloride. This mineral appears similar to common pyromorphite, and they have similar physical properties. Actually, mimetite ($\text{Pb}_5(\text{AsO}_4)_3\text{Cl}$) forms a mineral series with pyromorphite ($\text{Pb}_5(\text{PO}_4)_3\text{Cl}$) and with vanadinite ($\text{Pb}_5(\text{VO}_4)_3\text{Cl}$).

Mimetite is coloured yellow to brown to orange forms in lead deposits when galena and arsenopyrite oxidize. The crystals are brittle with a 3.5-4 Mohs hardness, and heavy with a 7.24 specific gravity. Mimetite has a resinous to adamantine luster. It dissolves in nitric acid.



Mimetite by Ivar Leidus - Own work, [CC BY-SA 4.0](https://creativecommons.org/licenses/by-sa/4.0/)

Mimetite has other names based on its appearance. When it or pyromorphite form as barrel-shaped crystals aggregated in curved hemispheres, it is called campylite. When it includes chromium that gives it a more orange red appearance, it is called bellite.

You can find this mineral in Mapimi, Durango, Mexico (probably the Ojuela Mine known for arsenate minerals) and Tsumeb, Namibia (now a geological heritage site).

Contact:

President

Kerry Day
pres@olmc.ca

Vice-President

Matthew Poirier
vicepres@olmc.ca

Secretary

Janet Borzecki
sec@olmc.ca

Treasurer

Catherine Garrett
treasurer@olmc.ca

Workshop Chair

Jean-Guy Bradette
workshop@olmc.ca

Membership Chair

Catherine Garrett
memberchair@olmc.ca

Show Chair

Stéphane Jetté
showchair@olmc.ca

Newsletter Editor

Eric Clara
news@olmc.ca

Auction Team

auctions@olmc.ca



Workshop Schedule

June 2025

Sunday	Monday	Tuesday	Wednesday	Thursday	Friday	Saturday
1 Enamel Course (Karla)	2	3 Silver 6:30-9:00 pm (JB) Lapidary 10-2 pm (RV)	4 Lapidary 5-9 pm (JGB)	5	6	7 Lapidary 10-4 pm (EC/NB)
8	9	10 Silversmiths 6:30-9:00 pm (DA)	11 Lapidary 5-9 pm (JGB)	12	13	14 Lapidary 10-4 pm (CG/KD)
15	16	17 Silversmiths 6:30-9:00 pm (JB)	18 Lapidary 5-9 pm (JGB)	19	20	21 Lapidary 10-4 pm (DA/JC)
22 Enamel Cloisonné Course (Karla)	23	24 Silversmiths 6:30-9:00 pm (KF)	25 Lapidary 5-9 pm (CG)	26	27	28 Lapidary 10-4 pm (SJ/JM)
29	30					

OLMC Membership Application

☐ New Membership

☐ Membership Renewal

☐ Individual **\$20**

☐ Family (2+ persons in the same residence) **\$30**

Benefits:

☒ Monthly Newsletter

☐ Newsletter advertisement: \$25 per year for members or \$55 for businesses
(Ten quarter pages per year over ten newsletters).

☒ OLMC online auctions

☒ OLMC field trips

More information can be found at <https://olmc.ca>
You can also go on our Facebook page: [OttawaLapsmithMineralClub](#)

Names(s): _____

Address: _____

City: _____ Province: _____

Postal Code: _____ Telephone: _____

Please specify your e-mail address to receive OLMC's newsletter:

Do you require a receipt? ☐

Yes

Payments are payable by **cash, cheque** to Ottawa Lapsmith and Mineral Club, or
E Transfer at treasurer@olmc.ca with the application form

Please mail your membership form and fees to:

Ottawa Lapsmith and Mineral Club

PO Box 57012, Ottawa RPO Gladstone, Ottawa, ON, K1R 1A1

Please note that all membership information is used only for administrative purposes.

Administration use only

Card provided: ☐ Yes ☐ No

Supervisor signed: ☐ Yes ☐ No

Date: _____