



# The Cutting Edge

Monthly Newsletter of the Ottawa Lapsmith and Mineral Club

## In this month's Newsletter:

President's Message	p. 1
Club News	p. 2
News Around the World	p. 3
Search for a New Studio Location	p. 4
Intarsia: You Should Try It!	p. 6
Upcoming Field Trips	p. 7
Sylvanite	p. 8
Upcoming Gem Shows	p. 9
Calendar	p. 9
Membership form	p. 10

### Mailing Address:

PO Box 36042 Wellington,  
Ottawa, ON, K1Y 4V3  
Phone: 613-850-5486

### Website:

<https://olmc.ca/>

### Facebook:

<http://www.facebook.com/OttawaLapsmithMineralClub>

### Instagram:

<https://www.instagram.com/olmcnews/>

## President's Message

### NEW WORKSHOP

The executive has decided to lease the basement of 228 Hannah near the corner of Montreal Road and the Vanier Parkway. The unit is currently under construction. It is slightly larger than our old Colonnade workshop for slightly less per month. We have not yet signed the lease, but we have expressed our intent. The unit may be ready for May 01. If not, it will be ready for June 01. We should have a new workshop by summer.

### EXECUTIVE POSITION OPEN

Our corporate Secretary Bob Boisvert will be officially stepping down at the Annual meeting this month. Demands on his time from other things have gotten too much. It is an executive position with a 1/4 vote in all major club decisions. If there are any interested candidates, please contact me ([pres@olmc.ca](mailto:pres@olmc.ca)) or any member of the executive. No experience necessary. Salary: zero dollars.

### OLD WORKSHOP

Our subtenant ARS repair has vacated our old Colonnade workshop. They paid our rent for the better part of three years and never did anything with the unit. Thanks ARS repair!

Kerry Day  
OLMC President

All members are invited to submit articles, proposals, and thoughts that could be included in the newsletters. Also, feel free to send your Classified ads by e-mail to: [news@olmc.ca](mailto:news@olmc.ca)

## Annual General Meeting April 14

The OLMC will hold the annual general meeting on **Sunday, April 14**. There will be a rock swap after the meeting. It will be hosted on Zoom for people who cannot attend in person in **Rockcliffe at 380 Springfield Ed. from 2-6 pm**.

This general meeting is an opportunity for the members of the Executive Committee to report on activities and decisions from 2023, and plans for 2024. Members are also encouraged to vote on who will be the new Executive Committee for the year. The new committee will then appoint voluntary members to certain club functions. Nominations for any position are always very welcome.

The Executive Committee, which includes the Chairs, usually meets once a month for an hour. They talk about news affecting the club, plan general events and services, report on finances, and related topics. The Chairs may have their own meetings using different schedules based on their needs

### Current Executive Committee

Past President: **vacant**

President: **Kerry Day, who may stay on one more year to re-establish the studio**

Vice-President: Matthew Poirier

Treasurer: Catherine Garrett

Secretary: **Bob Boisvert, who is leaving the role and needs a replacement**

### Current Appointed Chairs

Member Chair: Nathalie Bourget

Workshop Chair: Jean-Guy Bradette

Programme chair: **vacant**

Show Chair: Stéphane Jetté

Newsletter: Eric Clara



## OLMC GEM SHOW 2024

The show committee continues to seek club members willing to offer some of their time to help at this year's gem show. Just two hours is all that they ask. Jobs including demonstrating a lapidary skill, handling one of the club function tables such as admissions or membership, plus

helping with setting up and taking down the show. One critical function is help to advertise the show – graphics, social media, and ideas to advertise around the city. The show committee is very receptive to new ideas.

The show committee also requests club members showcase their work in one of the club display cabinets and at the Club Creations sales table. Many people pass by these displays during the show. It helps to show what skills can be taught and what people can do with them.

There will be more committee meetings throughout the year. That means lots of opportunities for every member to contribute. Meetings will be announced by e-mails to the club membership.

Please do not hesitate to contact Show Chair Stéphane Jetté at [showchair@olmc.ca](mailto:showchair@olmc.ca)





## ['Super Diamonds' Could be Out There](#)

A supercomputer known as "Frontier" has been used to model a 'super-diamond' made of eight carbon atoms and 30% harder than regular diamonds in a high-pressure phase that scientists are calling "BC8".

This material has not been seen in labs or anywhere on Earth, but scientists imagine it might exist in the cores of carbon-rich exoplanets. They base this on the discovery of a rare form of diamond known as lonsdaleite in meteorite fragments.

## [Properties to Classify Neolithic Tools](#)

Researchers from Tokyo Metropolitan University made Stone Age tools and used them to see how different woodworking activities created distinctive macroscopic and microscopic traces on edges.

They want to use these observations to classify tools found at archeological sites, and to better determine when Neolithic people started making tools for building houses, canoes, bows, and wells, as opposed to just chopping wood.

Wood-processing technology is associated with the Holocene period starting 10,000 years ago, but ground stone axes have been found in sites around Australia and Japan that date from 30,000 to 60,000 years ago.

## [22 Tombs Found in Copper Age Necropolis](#)

The discovery of a wide 5,000-year-old burial site at San Giorgio Bigarello in northern Italy was a surprise to archeologists.

The shallow graves included flint weapons, including daggers, "high-quality" flint arrowheads and blades, and some necklaces made with soapstone beads. It seems that the sandy hill location helped to preserve many of the skeletons because of the dry sand.

The identities of the remains are unknown, but the weapons suggest that many of the people were warriors. The north-west facing positions of the bodies suggests a relationship to the nearby Copper Age culture of the Remedello.

## [Europe's Biggest Salt Mine Re-Created in Minecraft Video Game](#)

Minesalt is specially developed content for the popular sandbox game Minecraft that allows players to experience the [Soledar Salt Mine](#) in eastern Ukraine.

French video game firm Endorah used the trove of images, videos, and personal memories of mine workers to re-create a three-dimensional model of the massive, serpentine tunnels in the game. One miner even drew a map of the mines by hand, which the team added into the game's design.

The underground complex contains intricate cave art, drawn by locals over decades and generations. There is a makeshift concert hall, where musicians have performed over the years, a soccer pitch where miners have played pickup football, and a sanitarium which some believe has health benefits. Then there's the church, which serves as a holy place for its workers and Soledar locals.

Funds raised through the game will go to rebuilding the Velykokostromska school in Dnipro oblast, in an area under Ukrainian control. In October 2022, a Russian missile struck the school's gymnasium, leveling most of the building. United24 says repairs will cost over \$1 million.



# Search for a New Studio Location

During the last Executive Committee meeting on March 28, the committee decided unanimously with two abstentions due to non-attendance to pursue a lease of 228 Hanna Street. The Committee has carefully reviewed the contract and will submit a counter proposal. If it is signed, then there may be actions to determine a floor plan. Today, the owner is still putting up drywall and other construction work.

Location: [228 Hanna Street](#), near the intersection of the Vanier Parkway and Montreal Road

This landlord is charging \$2600 all inclusive for \$1650 ft<sup>2</sup>. To compare costs, we were renting 1539 ft<sup>2</sup> for \$3000 in 2019. In 2024, today, Colonnade Bridgeport is charging \$2400+ for 1000 ft<sup>2</sup>.

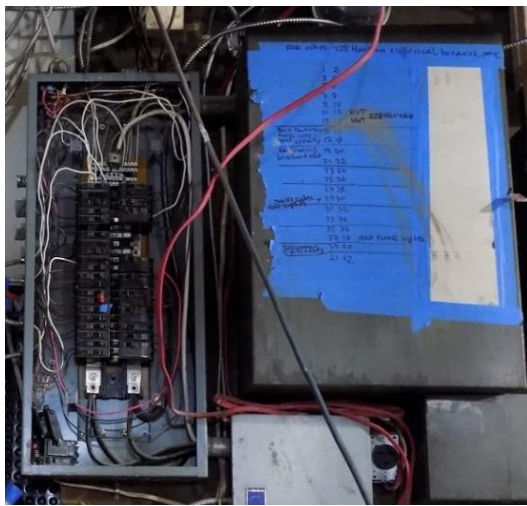
Available: May 1 to July 1. There is still a lot of construction work to do. The owner cannot give a firm date.

It is a basement unit which is under construction by the owner. It is accessed by the door to the right of Jean-Guy's red car. When finished it will be drywalled with a suspended ceiling and two full bathrooms. When finished each will have a full shower as well. It will be an open concept with smaller rooms as we desire. The wooden staircase is an escape exit.



*The front of 228 Hanna Street. All photos are courtesy of Matthew Poirier.*

The unit is a mix of the good and the bad. One negative is the long staircase. The unit is not wheelchair accessible and is not senior friendly. Another negative is that it only has two small windows at the very top of one wall. Interior ventilation to the outside is not a problem.

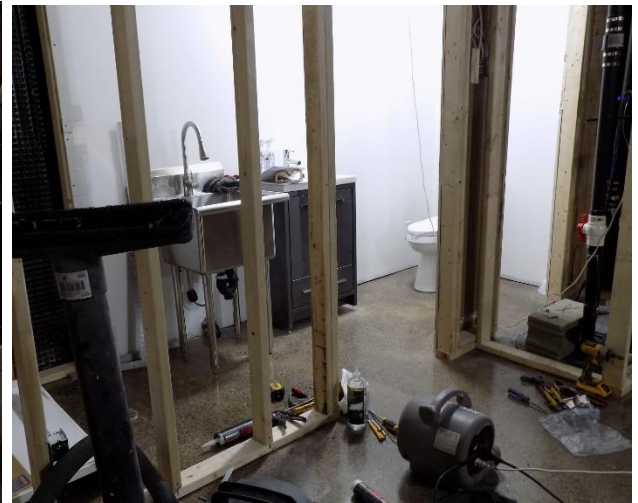
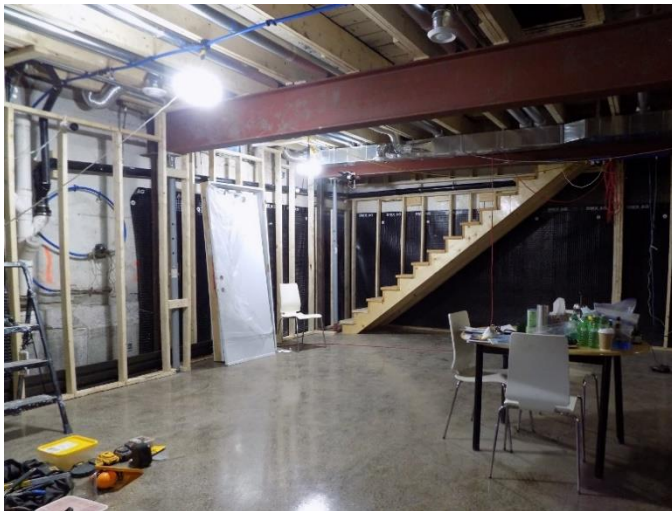
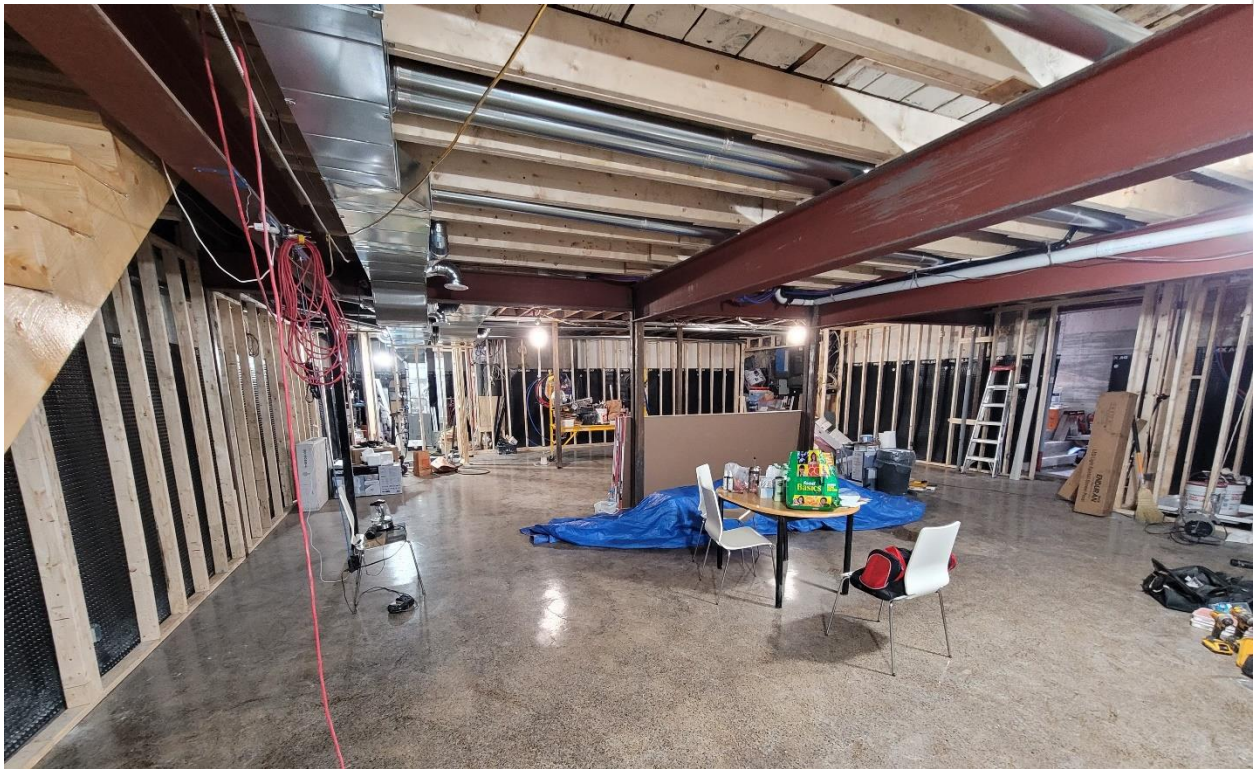


*Electrical Panel*

On the positive side, there is 200 Amp service with lots of empty circuits. There are a number of parking spots available, and there is abundant street parking. A neighboring tenant is the Poutinerie.

There maybe no way to get the big saw downstairs. An option would be to put it in a shed in the parking lot.

President Kerry Day has commented that the cost is cheap by Ottawa city standards. To compare costs, the previous workshop on Colonnade was 1539 ft<sup>2</sup>. Now the Colonnade location is charging \$2400 plus utilities per month for a 1000 ft<sup>2</sup> area.



All photos courtesy of Vice-President Matthew Poirier. Views of the space at 228 Hanna Street. Showing the open space, the stairs, and the washroom.



## Intarsia: You Should Try It!

Workshop Chair Jean-Guy Bradette discusses his use of this technique in this edited interview.

### How It Started

It started out very simply because I wanted to use some of my small opal pieces. So, I made trenches in stones, and that got me interested in matching colours and patterns.

I started off very simply by taking a piece of jasper which I didn't think had enough character. I drilled different sized holes in it, and I made circular cabs of different colour or more vibrant colour to fit inside those holes. To me, the piece looked better because it took away some of the blandness, and made it pop more.

The only intarsia I've done before was... sometimes in opals there are little holes. I will fill the little holes with other pieces of opals. I'm not sure if that is called intarsia or in-fill, but I started with that. One day I decided that I wasn't going to do another batch of cabs and start doing something a little bit different, because I do spend a couple of hours every day in my shop. And if you spend a couple of hours every day you accumulate quite a few cabochons.

After a while, it's a good idea for anybody cutting stones to try something different, different patterns, putting different colours together. Sometimes it's good just to take a few slabs, put them down in front of you and see if you can match different grades of colour or enhance the natural picture that you see in the stone or frame the little picture that you see.

I think somebody starting with intarsia should start very simply, either just putting two stones together or three rectangles or something like that. And you get more patient. You start doing more intricate patterns.

For sure, doing intricate patterns takes a lot longer, but the results are more spectacular.

### Design and Choice of Materials

I start off with making designs. I don't make them to scale or pretty close to scale. Then I start cutting my pieces. You do need a flat lap to get the proper edge. I usually glue at the maximum two pieces at a time. I flat lap one side so that I have a good working surface. I'll flatten two pieces and glue them together. Even if they aren't the same height, as long as the bottom is the same then I have a good working surface. I will flat lap the bottom before I go on to form the next piece. It takes a long time because some pieces have sixteen pieces to glue.



*Workshop Chair Jean-Guy Bradette*



*Cabochon with a carved circular trench filled with Mexican opal pieces in epoxy; photo courtesy of Jean-Guy Bradette.*



I use jaspers and agates a lot because they're similar in hardness and they're easy to work with. But I have recently tried really different hardnesses of stone to see how it would work, and it just requires more patience to grind them so that they end up exactly the same. I've even used some ivory in my recent intarsia.

### Shaping with Drills and Grinders

I only use a grinder after I've glued all my stones together. If I'm going to make an oval or a rectangle, then I use the same process as for a cab. For sure you need an angle ruler. If you are going to make pieces at an angle, you want the angles to be exactly the same.



I use diamond drills, and I have quite a variety of sizes. [to make circular trenches. Use two drill bits to make the outer and inner edges of the circle, then carve out the ring shape.]

I use 330 epoxy to glue my pieces together. For me it works the best. If I'm using the little pieces of opals in a deep trench, I will heat the stone up a little bit, and then I use the epoxy that you mix together that you pour. Because it's heated, the epoxy will become more liquid and go down into all the cavities.

*Left: Pieces of agate and jasper combined to form patterns and shapes; photos courtesy of Jean-Guy Bradette.*

Want to share your experiences with lapidary techniques in this newsletter? Contact the newsletter editor at [news@olmc.ca](mailto:news@olmc.ca)

## Upcoming Field Trips

On Saturday, May 4, club member Gord Brown will lead a Fluorescent collecting trip to the old **Long Lake Zinc mine** SW of Sharbot Lake on Highway 7. You can meet Gord at the mine gate at 5 PM or Kerry at the Eagleson road Park and Ride at 3 PM. The fluorescent minerals are best seen with a SW UV or a MW UV but some do fluoresce in LW. This locality is now a pay locality with fees of \$20/person and \$20/20 litre pail of rock. Rain date is May 11. Please see the [map link](#) courtesy of Mindat. Experience from the last collecting trip is that fluorescent collecting is best conducted at dusk.

Our **Cobalt collecting trip** is in advanced planning and will happen some time this summer. It is unlikely that the mine roads at Cobalt will be passable before black fly season.

Another **Perth fishscale peristerite** trip will happen some time this summer.

If anyone else would like to lead a field trip anywhere, please contact Kerry Day ([pres@olmc.ca](mailto:pres@olmc.ca))

## New mineral club

The old MIG group is becoming its own non-profit corporation. There are no details yet about the new club. It will be entirely mineralogy and mineral collecting.



## Pargem Designs

Your source for **hand-crafted wire-wrapped gemstone jewelry** made with **925 Sterling Silver & 14kt Gold Filled Wire**, and of quality

**Over 100 different hand-cut natural gemstone cabochons to choose from!**

**38 years of lapidary experience**

Visit my Etsy web page:

[etsy.com/ca/shop/PargemDesigns](https://etsy.com/ca/shop/PargemDesigns)

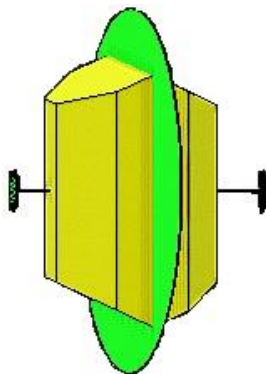
Contact me directly at:

[pargem.designs@gmail.com](mailto:pargem.designs@gmail.com)

## Sylvanite (Ag,Au)Te<sup>2</sup>

Sylvanite contains gold, silver, and tellurium, where the ratio of gold to silver around 1:1, but it could be as high as 3:1 gold to silver. It is a member of the krennerite group (AuTe<sup>2</sup>) of sulfides. It has a Mohs hardness of 1.5–2, and has a relatively high 8.2 specific gravity.

Sylvanite colour can range from steely gray to white. It is photosensitive, though. In bright light, it can accumulate a dark tarnish.



*Monoclinic 2/m crystal*

Sylvanite crystallizes in the monoclinic 2/m system, but crystals are rare.

Usually it is found in a granular or bladed form.

It can be found in ore veins in Hungary, Australia (East Kalgoorlie district), Canada (Kirkland Lake Gold District), and the western United States (Cripple Creek ore deposit).



*Sylvanite ((Au,Ag)2Te4) from the Cripple Creek; photo by James St. John; Wikimedia Creative Commons*



**Contact:**

**President**  
Kerry Day  
[pres@olmc.ca](mailto:pres@olmc.ca)

**Vice-President**  
Matthew Poirier  
[vicepres@olmc.ca](mailto:vicepres@olmc.ca)

**Secretary**  
Bob Boisvert  
[sec@olmc.ca](mailto:sec@olmc.ca)

**Treasurer**  
Catherine Garrett  
[treasurer@olmc.ca](mailto:treasurer@olmc.ca)

**Workshop Chair**  
Jean-Guy Bradette  
[workshop@olmc.ca](mailto:workshop@olmc.ca)

**Membership Chair**  
Nathalie Bourget  
[memberchair@olmc.ca](mailto:memberchair@olmc.ca)

**Show Chair**  
Stéphane Jetté  
[showchair@olmc.ca](mailto:showchair@olmc.ca)

**Newsletter Editor**  
Eric Clara  
[news@olmc.ca](mailto:news@olmc.ca)

**Auction Team**  
[auctions@olmc.ca](mailto:auctions@olmc.ca)

*Upcoming Gem and Mineral Shows*

**Paris Gem & Mineral Show**  
Hosted by the Brantford Lapidary and Mineral Society  
April 6-7, 10:00 to 17:00  
Paris Fairgrounds, 139 Silver Street  
Paris, Ontario

Admission: \$7  
free entrance to children under 12  
Daily Door Prize featuring Ammolite

**Nipissing Rock & Mineral Club Sale & Auction**

April 13, 2024, 9:00 to 17:00  
Callander Community Centre  
Nipissing, Ontario

Admission: \$1  
rocks, minerals, gems, jewellery,  
activities for kids

**Spring Metal Rocks Show & Sale**

Free Admission  
Malting Tower, Third Floor  
Tett Centre, 370 King St. W, Kingston

May 2, 19:00 - 21:00  
May 3, 10:00 - 18:00  
May 4, 10:00 - 17:00  
May 5, 10:00 - 15:00

**Workshop Schedule**

**April 2024**

Sunday	Monday	Tuesday	Wednesday	Thursday	Friday	Saturday
	1 	2	3	4	5	6 Paris Gem Show
7 Paris Gem Show	8	9	10	11	12	13 Nipissing Sale and Auction
14 OLMC Annual General Meeting	15	16	17	18	19	20
21	22	23	24	25	26	27
28	29	30				



# OLMC Membership Application

New Membership

Membership Renewal

Individual **\$20**

Family (2+ persons in the same residence) **\$30**

**Benefits:**

Monthly Newsletter

Newsletter advertisement: \$25 per year for members or \$55 for businesses  
(Ten quarter pages per year over ten newsletters).

Silversmith online meeting 2/month

Mineral Interest Group online monthly meeting

OLMC online auctions

OLMC field trips

More information can be found at <http://www.olmc.ca>  
You can also go on our Facebook page: [OttawaLapsmithandmineralclub](https://www.facebook.com/OttawaLapsmithandmineralclub)

Names(s): \_\_\_\_\_

Address: \_\_\_\_\_

City: \_\_\_\_\_ Province: \_\_\_\_\_

Postal Code: \_\_\_\_\_ Telephone: \_\_\_\_\_

Please specify your e-mail address to receive OLMC's newsletter:

\_\_\_\_\_

Do you require a receipt?

Yes

Payments are payable by **cash, cheque** to Ottawa Lapsmith and Mineral Club, or  
**E Transfer** at [treasurer@olmc.ca](mailto:treasurer@olmc.ca)

Please mail your membership form and fees to:

Ottawa Lapsmith and Mineral Club  
PO Box 36042 Wellington, Ottawa, ON, K1Y 4V3

*Please note that all membership information is used only for administrative purposes.*

Administration use only

Card provided:  Yes  No

Supervisor signed:  Yes  No

Date: \_\_\_\_\_