



# The Cutting Edge

Monthly Newsletter of the Ottawa Lapsmith and Mineral Club

## In this month's Newsletter:

President's Message	p. 1
Club News	p. 2
News Around the World	p. 3
Wieliczka Salt Mine	p. 4
Great OLMC Jewellery Challenge #10	p. 5
Nuggets: Lepidolite	p.8
Lost & Found: Intaglios Down the Drain	p. 9
Calendar	p. 9
Membership form	p. 10

**Workshop Address:**  
190-1C Colonnade road  
Ottawa, ON K2E 7J5  
**Phone:** 613-700-GEMS (4367)

**Website:**  
<http://www.olmc.ca>

**Facebook:**  
<http://www.facebook.com/OttawaLapsmithMineralClub>

## President's Message

Our search for a new workshop has started. Finding a rental will not be easy. Most places that advertise "for rent" actually mean "for lease". Small rentals are usually office rentals, not industrial rentals.

We are planning another club auction in late April. There are no details yet. Some of the organizers have been on vacation.

The date for our fall show is now fixed at September 16-17.

The Peterborough Gem and Mineral show was well attended including three of our club members who visited.

Kerry Day

OLMC President

### In Memorium: Ann Jensen April 27, 1937 - March 11, 2023

We are saddened to note the passing of Ann Jensen, who regularly displayed her silver and gold jewellery in the Lapsmith shows. Ann was unable to participate in recent years, but we remember her fondly.

Many club members may remember Ann fondly. She was an ardent rock hound, a very gifted jeweller, and she was one of the long term show dealers.

<https://tributearchive.com/obituaries/27494341/ann-jensen>

### Field Trip: Beryl Pit in Quadville, Ontario, April 30

Weather permitting. The Beryl Pit is a commercial fee collecting site. Last year the owners scrapped the floor and created a rubble pile just outside the quarry entrance.

There is an abundance of fine peristerite in the pile. You have to work for it. Bring bug spray, just in case.

Contact Kerry Day ([pres@olmc.ca](mailto:pres@olmc.ca)) for details.

All members are invited to submit articles, proposals, and thoughts that could be included in the newsletters. Also, feel free to send your Classified ads by e-mail to: [news@olmc.ca](mailto:news@olmc.ca)

### **MIG Meeting**

**Date:** April 17, 7:00 p.m.

**Presenter:** TBD

**Topic:** TBD

OLMC members can join the Mineral Interest Group to get invites to meetings. Contact [montgomeryjr50@gmail.com](mailto:montgomeryjr50@gmail.com)

## **Rock and Mineral Shows Every Weekend**

Check the calendar in this newsletter and the club's Facebook page for information about gem, mineral and jewellery shows and other events that are happening every weekend this month.

## **Geoheritage Day**

Carleton University Department of Earth Sciences celebrates its 70th anniversary this year! They are planning activities and celebrations on the weekend of September 23-24, 2023. You are warmly invited.

Registration will open in May - <https://earthsci.carleton.ca/>

Explore Geoheritage Day: <https://geoheritageday.carleton.ca/>

### **Saturday, September 23, 10:00 am – 3:00 pm, Geoheritage Day:**

15th annual Geoheritage Day. Visit exceptional geological sites in parks and green spaces of the Ottawa – Gatineau area. The sites will be hosted from 10:00 am – 3:00 pm.

Activities hosted on campus include a Department of Earth Sciences Tour & Campus Geoheritage Sites.

### **Sunday, September 24, 10:00 am – 12:00 noon, Downtown Walking Tour:**

Alumni Walking Tour of Dimension (Building) Stones in Downtown Ottawa, starting at the Parliament Buildings, led by Quentin Gall. Limited capacity, registration will be required.

The Friends of Canadian Geoheritage is a grassroots movement, begun by Dr. Alan J. Donaldson in 2003 and formed to promote recognition and preservation of Canada's geological heritage.

## **Request for Comment: Ontario Mineral Collecting Policy**

The Ministry of Mines posted an updated draft of the Ontario Mineral Collecting Policy, and they invite commentary from the public. The Ontario Mineral Collecting Policy covers what a rockhouser can and cannot do when collecting.

The CCFMS encourages club members to comment. Submit your commentary through a web form or email your commentary. Download the draft policy from the same webpage.

Web form: <https://ero.ontario.ca/notice/019-6692>

E-Mail: Sophie Fortin [Sophie.Fortin@ontario.ca](mailto:Sophie.Fortin@ontario.ca)

The policy has been languishing since 2011 – a dozen years. The old policy was very influential Canada-wide. It was adopted by many geology clubs, organizations, and associations.

**Can't find the right piece of jewellery?**  
Come create something unique!  
We have everything!



**Canada Beading Supply**

Serving customers for over 30 years

Your dream. Our beads. We help!

190 Colonnade Rd. S. Unit 8B, Ottawa  
613-727-3886 (800-291-6668)  
www.canbead.com



## Metal exchange is rocked

Financial services firm JPMorgan Chase thought they had 54 metric tons of nickel ore briquettes stored in Rotterdam, but that turned out to be sacks of stones.

The incident another problem for the London Metal Exchange (LME) that oversees but does not own the warehouse. LME is under investigation regarding unusual nickel-derivatives trading last year.

The amount of metal is relatively small, representing 0.1% of all nickel deposited at LME warehouses, and valued at \$1.3 million today.

<https://www.wsj.com/livecoverage/stock-market-news-today-03-17-2023/card/found-inside-a-rotterdam-nickel-warehouse-bags-of-stones-GuqRUIhymf8xPDAJk6hm>

## The future of e-waste is cyanobacteria

A team of scientists at the Technical University of Munich found 12 exotic cyanobacterial species that are really good at absorbing rare-earth elements. These bacteria could be used to reclaim desirable elements from waste, while also cleaning up the land and the water.

After years of trying varieties of algae and other bacteria species with no good results, the team turned to cyanobacteria suspended in an aqueous solution. These creatures exist in harsh and specialized environments around the world. They do not know if evolution to adapt to these environments is linked to absorbing rare-earth elements.

It is relatively easy to get the rare-earth elements out of the biomass by making the aqueous solution more acidic with acid, lye, or salt. The cyanobacteria just expel the metal, making the solution reusable.

<https://www.frontiersin.org/articles/10.3389/fbioe.2023.1130939/full>

## Earth has a secret core it wasn't telling us about

New analysis of seismic waves of earthquakes passing through the Earth has caused scientists to conclude the planet's core is actually two layers.

Both layers of the core are an iron-nickel alloy with trace amounts of other elements, but the 644-kilometer-wide "innermost inner core" changes the speed of seismic waves in a different way than the layer above it.

This layer had not been seen before in detail because its composition is so similar to the inner core, and the transition between the layers is not sharp. Consequently, direct reflections of seismic waves from the core did not show it.

The study relied on powerful earthquakes that created vibrations which traveled from one side of the planet to the other up to five times.

<https://www.nature.com/articles/s41467-023-36074-2>



## Wieliczka Salt Mine

The Wieliczka Salt Mine is in Wieliczka, near Kraków, Poland. In Neolithic times, table salt was produced in the area from the upwelling brine. Salt was produced until 2007, though commercial mining ceased in 1996 due to falling salt prices and mine flooding. It was one of the world's oldest operating salt mines. Today, the Wieliczka Salt Mine is a UNESCO World Heritage Site.

The mine was excavated in the 13th century, starting with shafts for wells. The Saltworks Castle was built in the 14th century. It was an administrative centre overseeing mining operations in Wieliczka and Bochnia to the east (both mining the same geological deposit), saltworks, workshops, and warehouses.. There is also a Kraków Saltworks Museum.

The mine is 327 metres deep, with over 245 kilometers of horizontal maze-like passages and chambers carved into the grey-coloured rock salt. The mine contains an underground lake, four chapels, and a reception hall for private parties and weddings.



*Wieliczka Salt Mine Entrance; photo by Jan Jerszyński, Wikimedia Commons*



*Wooden winch inside the mine; photo by Kaboldy, Wikimedia Commons*

The mine has also been used as a location for movies and television shows, as well as novels.

Visitors can travel along a 3.5-kilometer route to see exhibits that describe the history and technological improvements of mine operations since the Middle ages. These include statues from various historical periods that were carved by miners from the rock, and more recent ones from modern artists.

In the castle, there are archaeological exhibits showing the history of settlement in the area since Neolithic teims. A Gothic style hall contains portraits of former mine managers. There is a colourful exhibit of salt dispensers made of all sorts of materials from around the world., some of which are over 400 years old.

<https://whc.unesco.org/en/list/32/> <https://www.wieliczka-saltmine.com/>

### Video: Hydraulic Gold Mining in the American Old West (4:37 minutes)

<https://www.youtube.com/watch?v=888vHlarWCE>

Gold in the creeks and rivers was found by panning and sluicing, but many of the richest mining areas were in old ancient river channels high above the existing water line. To mine these deposits, hydraulic mining (high pressured water streams) was used to literally wash away the hillsides. The clays and gravel would be directed to a sluice box to filter out the gold.



**The Great OLMC Winter Jewellery Challenge #10**

**It's a Beautiful Valentine Heart**

**The Rules**

1. a neckpiece or pair of earrings or bracelet or tiara or sculpture or whatever you choose, but it must include at least one heart.
2. Jewellery must be wearable.
3. Incorporate 2+ pieces of 2 different gauges of copper, silver, aluminum, or whatever wire.

**Pam Nora Ellis, "Scrappy Heart" Pendant**  
 Old copper electrical wire as the base and three scrappy bits of fine silver and sterling silver of various sizes.



**Janet Borzecki, Heart Pendant**

This heart pendant is made of scraps of sterling I found on my bench left over from projects fused to a heart shaped 1mm armature. It has a 1.3mm wire bail and is wrapped in .8mm gold filled wire I found in my bench.

**Angele Aubin, Heart Pendant**

The base of the pendant is a corner of silver sheet. The texture was done by fusing silver dust and shavings. The frame on the piece is made from thicker gauge wire which I textured.

The smaller heart is a thinner gauge wire, and it was a practice piece that had been collecting dust on my desk for many months.







**Vera Rehill, Heart Pin with Copper Stick Pin**

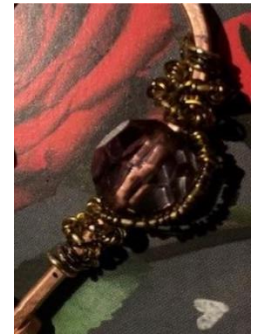
This stylized heart is pin for a sweater, pashmina, coat lapel, etc.

- 14-gauge copper wire (electrical)
  - 22-gauge copper wire (electrical)
  - vintage glass beads
  - hammered texture added
  - LOS patina finished with a brass brush for an antique look
- The fine gauge wire is wrapped around the heavier gauge wire and holds the beads in place. The stem on the pin is curved to secure the pin in the material and will not slip out easily.



**Sushila Raju, Heart Pendant**

Used 16 gauge for the heart, 24 gauge for the connectors, 24 and 27 for the coils.



**Joy McDonell, Heart Pendant**

The outer frame is made of two twisted wires (one pre-twisted) and then there is a different size wire for the rose quartz dangle bead, which has been kicking around my various studios for at least 20 years!

The 2nd heart is Keum Boo. So maybe we have 4 hearts if you count the ones beating passionately in the breasts of the lovebirds.







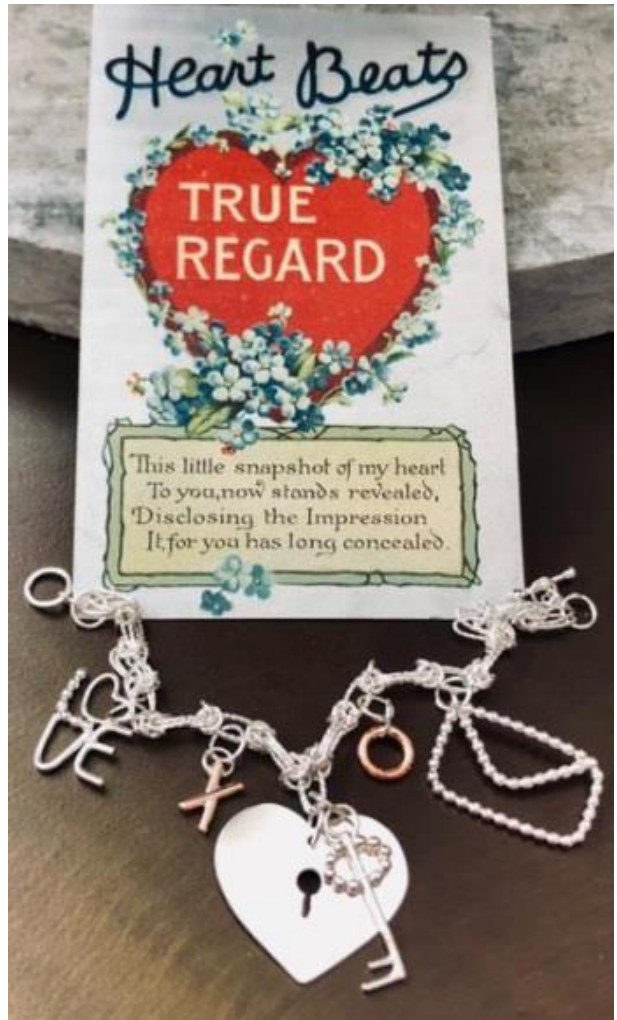
**Mary Laurenzio, Heart Pendant**

A heat patina copper heart trimmed with 14-gauge textured silver wire heart and a 20-gauge bail.  
 Double heart silver necklace: a textured 14-gauge heart pendant and a small 16-gauge textured heart fixed within the chain.



**Csilla Ekes, Heart Pendant**

This is my very first torch enameled piece. 4-5 layers of enamel on this piece. I made two different sized square wire for the frame and stem, and one 1/2 round for the prongs. The heart is a milled-out copper penny. The sterling scraps for making the wire all came from Jov.



**Vicki Jasperse, Heart Pendant**

I used a leftover piece of chain for the bracelet, and the charms are constructed of various lengths of scrap wire:  
 1mm, 1.25mm, 1.5mm silver wire  
 2.3mm beaded wire  
 2mm copper wire



SilviaFindings has been a manufacturer of sterling silver and gold settings since 2004. We have a large variety of settings in various designs, shapes, and sizes for earrings, pendants, rings, and bracelets.

After you buy a gemstone, you may want to have your stone set to create a unique piece of jewellery. We have the expertise to provide suggestions on which setting is the right setting for your stone.

We also offer affordable custom-made jewellery services for stones that have unique shapes and dimensions, with no minimum purchase requirement and for a guaranteed unbeatable low price!

*SilviaFindings Team*



SilviaFindings fabrique des montures en argent sterling et en or depuis 2004. Nous disposons d'une grande variété de montures de différents modèles, formes et tailles pour boucles d'oreilles, pendentifs, bagues et bracelets.

Après avoir acheté une pierre précieuse, vous voudrez peut-être faire sertir votre pierre pour créer un bijou unique. Nous avons l'expertise nécessaire pour vous suggérer la monture qui convient le mieux à votre pierre.

Nous offrons également des services abordables de bijouterie sur mesure pour les pierres qui ont une forme et des dimensions uniques, sans obligation d'achat minimum et pour un prix bas garanti imbattable!

*L'équipe SilviaFindings*



228-13986 Cambie Road,  
Richmond, BC V6V 2K3



778-982-6689  
Info@silviafindings.com  
www.diyjewellery.com  
www.custommadejewellery.ca



## Nuggets

Lepidolite is a member of trioctahedral micas with a structure like biotite. It can only form in geochemical environments with high amounts of lithium, so it is rare. This is the most abundant lithium-bearing mineral. When crushed and processed, it is also a major source of rubidium.

Lepidolite is found in pegmatite bodies and high-temperature quartz veins, greisens and granite. Pink, purple, and red colours are caused by trace amounts of manganese. It can also be gray, and rarely yellow or colorless. Lepidolite can be found with quartz, feldspar, spodumene, amblygonite, tourmaline, columbite, cassiterite, topaz and beryl.

The chemical formula is:  
 $K(Li,Al)_3(Al,Si,Rb)_4O_{10}(F,OH)_2$



## Pargem Designs

Your source for **hand-crafted wire-wrapped gemstone jewelry** made with 925 Sterling Silver & 14kt Gold Filled Wire, and of quality

**Over 100 different hand-cut natural gemstone cabochons to choose from!**

**38 years of lapidary experience**

Visit my Etsy web page:

[etsy.com/ca/shop/PargemDesigns](https://www.etsy.com/ca/shop/PargemDesigns)

Contact me directly at:

[pargem.designs@gmail.com](mailto:pargem.designs@gmail.com)



**Contact:**

**President**  
Kerry Day  
[pres@olmc.ca](mailto:pres@olmc.ca)

**Vice-President**  
Matthew Poirier  
[vicepres@olmc.ca](mailto:vicepres@olmc.ca)

**Secretary**  
Bob Boisvert  
[sec@olmc.ca](mailto:sec@olmc.ca)

**Treasurer**  
Rita Hudec  
[treasurer@olmc.ca](mailto:treasurer@olmc.ca)

**Workshop Chair**  
Jean-Guy Bradette  
[workshop@olmc.ca](mailto:workshop@olmc.ca)

**Membership Chair**  
Nathalie Bourget  
[memberchair@olmc.ca](mailto:memberchair@olmc.ca)

**Show Chair**  
Stéphane Jetté  
[showchair@olmc.ca](mailto:showchair@olmc.ca)

**Newsletter Editor**  
Eric Clara  
[news@olmc.ca](mailto:news@olmc.ca)

**Auction Team**  
[auctions@olmc.ca](mailto:auctions@olmc.ca)

## Lost & Found: Intaglios Down the Drain

While excavating a Roman bathhouse in Carlisle, England, archaeologists found more than 30 carved amethyst, jasper and carnelian gemstones that collected in a drain.

Excavation leader Frank Giecco said, “They were set with a vegetable glue and, in the hot and sweaty bathhouse, they fell out of the ring settings ... You don’t find such gems on low-status Roman sites.”

Their small size would have needed advanced craftsmanship to make the carvings.

Engraved gemstones are called intaglios. They were first used in ancient Mesopotamia. They were used to authenticate documents by pressing the intaglio into a spot of clay or wax, so each intaglio is linked to an individual.

Also found at the site were women’s hairpins and glass beads, shards of pottery, weapons and coins. The discoveries will most likely go on view at the Tullie House Museum and Art Gallery.



*Intaglio Item SF415, photo by Anna Giecco*

<https://www.smithsonianmag.com/smart-news/lost-gems-over-2000-years-old-found-in-roman-baths-180981566/>

Workshop Schedule						
April 2023						
Sunday	Monday	Tuesday	Wednesday	Thursday	Friday	Saturday
						1 Paris Gem Show
2 Paris Gem Show	3	4 Silversmiths Meeting 7:00 p.m	5	6	7	8 Scarborough Lapidary Auction
9	10	11	12	13	14	15 Nipissing Mineral Sale & Auction
16	17 MIG Meeting 7:00 p.m.	18 Silversmiths Meeting 7:00 p.m	19	20	21	22 Haileybury Gem Show
23/30 Beryl Pit April 30	24	25	26	27	28	29



# OLMC Membership Application

New Membership

Membership Renewal

Individual **\$20**

Family (2+ persons in the same residence) **\$30**

**Benefits:**

Monthly Newsletter

Newsletter advertisement: \$25 per year for members or \$55 for businesses  
(Ten quarter pages per year over ten newsletters).

Silversmith online meeting 2/month

Mineral Interest Group online monthly meeting

OLMC online auctions

OLMC field trips

More information can be found at <http://www.olmc.ca>  
You can also go on our Facebook page: [OttawaLapsmithandmineralclub](https://www.facebook.com/OttawaLapsmithandmineralclub)

Names(s): \_\_\_\_\_

Address: \_\_\_\_\_

City: \_\_\_\_\_ Province: \_\_\_\_\_

Postal Code: \_\_\_\_\_ Telephone: \_\_\_\_\_

Please specify your e-mail address to receive OLMC's newsletter:

\_\_\_\_\_

Do you require a receipt?

Yes

Payments are payable by **cash, cheque** to Ottawa Lapsmith and Mineral Club, or  
**E Transfer** at [treasurer@olmc.ca](mailto:treasurer@olmc.ca)

Please mail your membership form and fees to:

Ottawa Lapsmith and Mineral Club  
P. O. Box 59028 Alta Vista, Ottawa, On K1G 5T7

*Please note that all membership information is used only for administrative purposes.*

Administration use only

Card provided:  Yes  No

Supervisor signed:  Yes  No

Date: \_\_\_\_\_